



Cecil Hills High School

Principal Mark Sutton
50 Spencer Road Cecil Hills NSW 2171
www.cecilhillshigh.nsw.edu.au

Tel (02) 9822-1430
Fax (02) 9822-1436
cecilhills-h.school@det.nsw.edu.au
CRICOS: NSW Department of Education – Schools
CRICOS Provider: 00588M

6 November 2020

What Happened At P&C? – November 2020

Dear parents and carers,

We had an excellent evening meeting this month via Zoom. Thanks to those parents and community members who attended online. We covered a number of topics:

- **Attendance:** We have a focus on attendance this year. Students should attend school 100% of the time unless there is a medical issue. We have new school staff following up on attendance. You may receive a phone call from time to time from our school staff to help encourage the best possible attendance. We have seen an improvement with attendance and punctuality.
- **Junior Coordinator and Senior Coordinator roles:** Thanks to Gianni Alfonsi, Senior Coordinator, who provided an overview of these roles. The school has successfully used these roles in the last few years to support senior students and now the program is being expanded to junior students.
- **Tell Them From Me Survey:** Thanks to the nearly 200 parents who completed this survey. This provides us with important information to help shape our future directions. Further information will be provided on trends in the survey data. Some preliminary information has been shared with parents. Some of the major themes for consideration include:
 - support for beginning teachers
 - enhanced communication from teachers to parents about learning of individual students
 - expectations around homework and strategies for parents to support homework
- **Strategic improvement plan:** The school has completed writing its situational analysis for the 2021-2024 strategic improvement plan. We have now created three draft strategic directions as follows:
 1. Student growth and attainment
 2. Professional practice and expertise
 3. Community engagement and wellbeing
- **Pedestrian crossing:** The school has applied for a School Crossing Supervisor but only primary schools are able to apply under the program criteria. Parents and community members are asked to email the school at cecilhills-h.school@det.nsw.edu.au with any comments on the need for a School Crossing Supervisor to help regulate traffic flow and make the crossings safe for students.
- **Next meeting:** The next P&C meeting will take place at 6:30pm on Monday, 7 December 2020. These meetings are for us to share information with you and we benefit from these meetings just as much as you. Your presence and ideas are what we need.

Thanks to everyone who logged into our meeting. I look forward to continuing to work with our parents and community members. Please let me know if you have any questions.

Kind regards

Mark Sutton
Principal



P&C MEETING

2 NOVEMBER 2020

Communication



***like our
Facebook
page***



Communication

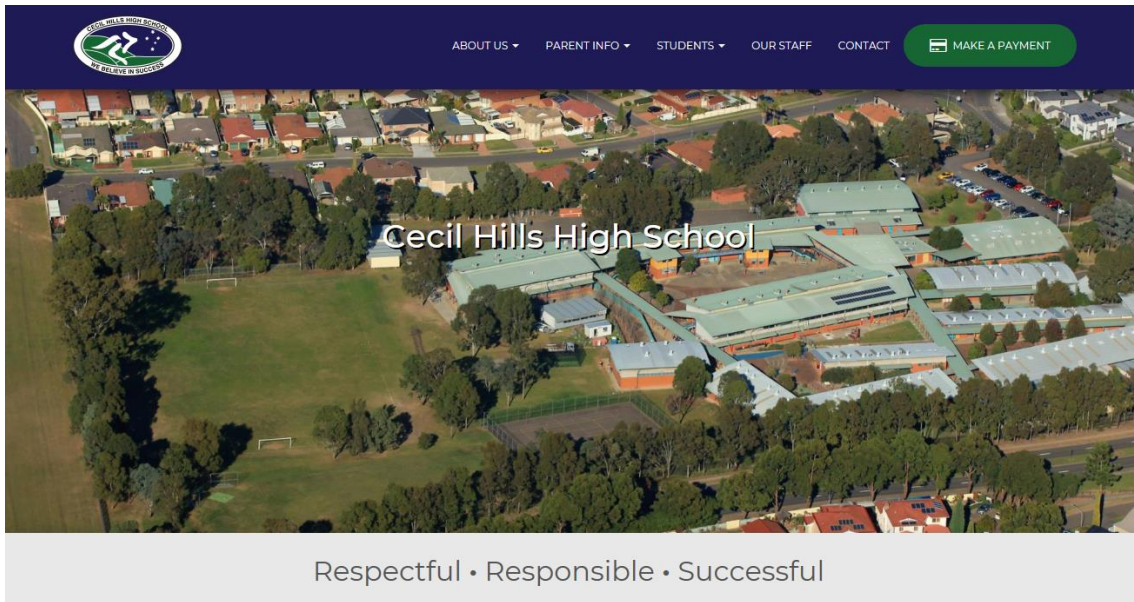


***download our
app***

***School App
Solution***



Communication



***visit our
website***



Careers Website

*visit our
Careers
website*

<https://www.chhscareers.com.au/>

Communication



***update your
email address
with the school***

Every day

COUNTS!



School success starts
with attendance

Attendance

- 200 school days each year
- 13 years of school education
- 2600 school days in total (200 x 13)
- 90% attendance = 2340 out of 2600 days

**90% attendance means
260 days or 1.3 years
of education would be missed**



Junior and Senior Coordinators

Gianni Alfonsi

Senior Coordinator





Senior & Junior Coordinators

for Years 9 to 12....

- Yr12 – Gianni Alfonsi
- Yr11 – Regan Schell (Matt Evans in 2021)
- Yr 9 & 10 – Nic Chambour
- Careers Advisor – Mary Reid

1. Monitor and support the completion of school work

Procedure:

When a student is not meeting course requirements due to class work, homework or assessment tasks, the following process is followed:

(i). Student's Class Work/Assessment Task is deemed unsatisfactory by the classroom teacher.

Eg. Incomplete, not submitted, plagiarised, non-serious attempt, etc



(ii). Initial Teacher/Faculty Interventions: Discussion with the student, time extension, detention, faculty letter, phone call home or Head Teacher interview.

Misadventure Form: For extenuating circumstances to explain why the task was not done.



Not Resolved

(iii). Teacher writes N-Warning (NESA) letter which is mailed home to parents, emailed (student & parent) and the Deputy Principal issues a copy to the student:

- Yrs 9 & 10 ROSA (Record of School Achievement)
- Yr11 Preliminary HSC
- Yr12 HSC

This letter states the work the student needs to complete to satisfy course requirements.



(iv) Seniors (Yr11 & 12)

- are placed on a Senior Improvement Program (SIP) by the Deputy Principal.

- When: EVERY Tuesday
- Where: Library
- Time: 12.10pm to 2.10pm
- Supervising Teachers: Senior Coordinators



(iv). Juniors (Yr9 & 10)

- Monitored by Year Advisors (YA) and DP
- Junior Coordinator, YA & DP organise lunch time meetings to address N-Warning letter progress with students



(v). Students are continually monitored until school work is complete



(vi). N-Determinations

If school work (N-Warning letters) are not resolved by the end of the year, it could result in:

- repeating Yr10, 11 or 12
- given assistance to seek alternate pathways to school (TAFE, work, apprenticeships, traineeships, etc)

WHY?

To ensure our students complete all set tasks to meet course requirements and achieve their personal best.

2. Transition Team – Work with our Careers Advisor to support students in post school pathways

1. Support our Careers Adviser (Mrs Mary Reid) to deliver career programs & opportunities to all year groups.

Examples:

TAFE or Private Provider opportunities, School Career Programs (Nail it), Career/TAFE/Uni information sessions at school, Work Experience, Resumes & Cover Letters, Preparation for Job Interviews, etc

2. Extensive work one-on-one with Yr10 to 12 students considering alternate pathways to assist their journey from school to work, school to further training or re-engaging with school. Identified by DP & YA.

3. In 2020 our school is part of the EPPP (Educational Pathways Pilot Program) which has provided us more opportunities for students in pathways beyond school or its preparation.

Examples:

Pre & Apprenticeship opportunities, SALT (Women in Trades), Live Career Talks, EDGE workshops (preparing students for work), Trades Bootcamp, YES Plus (TAFE taster program Yr10), etc.

3. Senior Study Periods & Connect (Roll Call)

1. Supervise and support Yr11 TAFE or Yr12 (TAFE/dropped subject) in the Library Senior Area

- Periods 1 to 3...implement study period policy to ensure seniors are engaged in school work.
- Monitor N-Awards, discuss study strategies, career pathway sessions, Uni applications, etc.
- One-on-one student support with study habits, career plans, subject assistance and welfare concerns.

2. Monitor & support staff during *Year 11 & 12 Connect* classes

- Liaise with Connect Teacher & Head Teacher to ensure senior students are using time effectively.
- Yr11 & 12 Weekly Assemblies: re-emphasise school expectations, N-Awards, NESAs requirements, study techniques, motivational talks, etc

4. Other Duties as directed by Principal

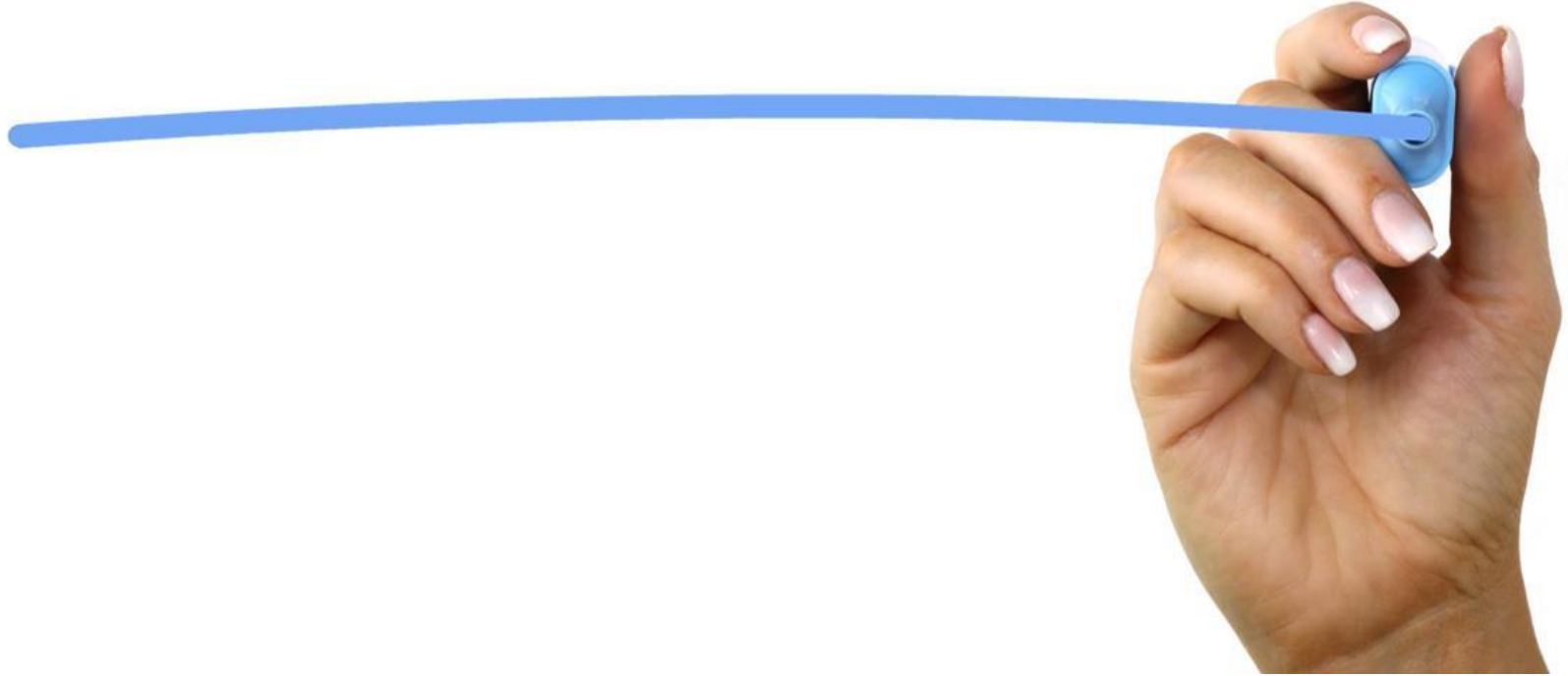
- ▶ *Assessment Booklet*

Liaise with Deputy Principal to evaluate and convey to students.

- ▶ *All My Own Work* facilitators

Compulsory program for Yr10 Term 4 Week 8.

QUESTIONS





Tell Them From Me Parent Survey

Two-way Communication with Parents

Parents are informed

School Mean (NSW Govt Norm)

6.8 (6.6)

Reports on my child's progress are written in terms I understand.	7.7
If there were concerns with my child's behaviour at school, the teachers would inform me immediately.	7.4
I am informed about my child's behaviour at school, whether positive or negative.	7.0
The teachers would inform me if my child were not making adequate progress in school subjects.	6.9
I am well informed about my child's progress in school subjects.	6.7
I am informed about opportunities concerning my child's future.	6.1
I am informed about my child's social and emotional development.	5.8

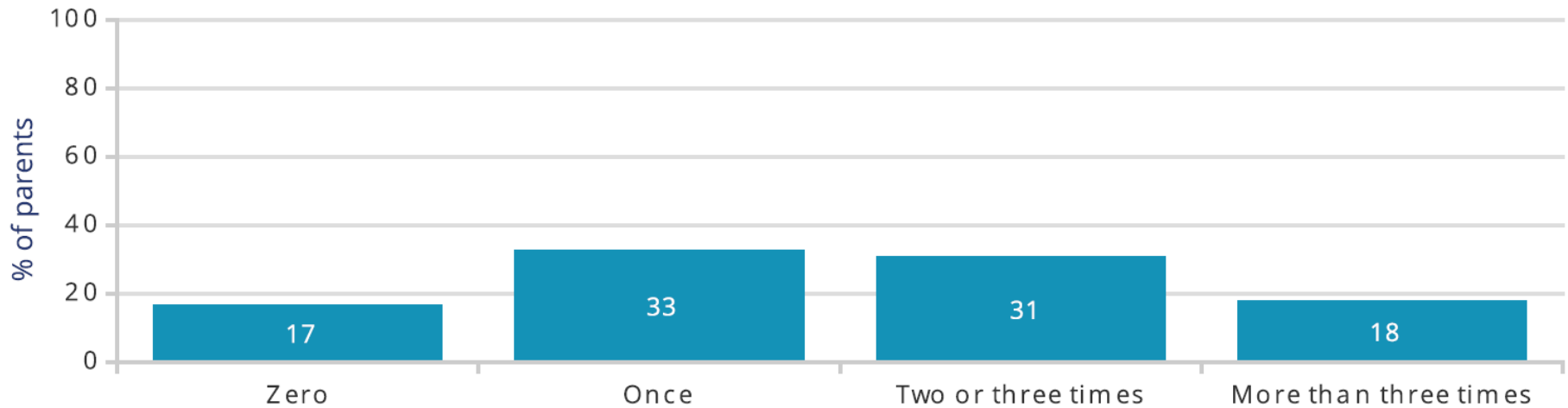


Tell Them From Me Parent Survey

Parents' Participation at School

Parents talked with a teacher

Since the beginning of the school year, how often have you talked with a teacher about your child's learning or behaviour?





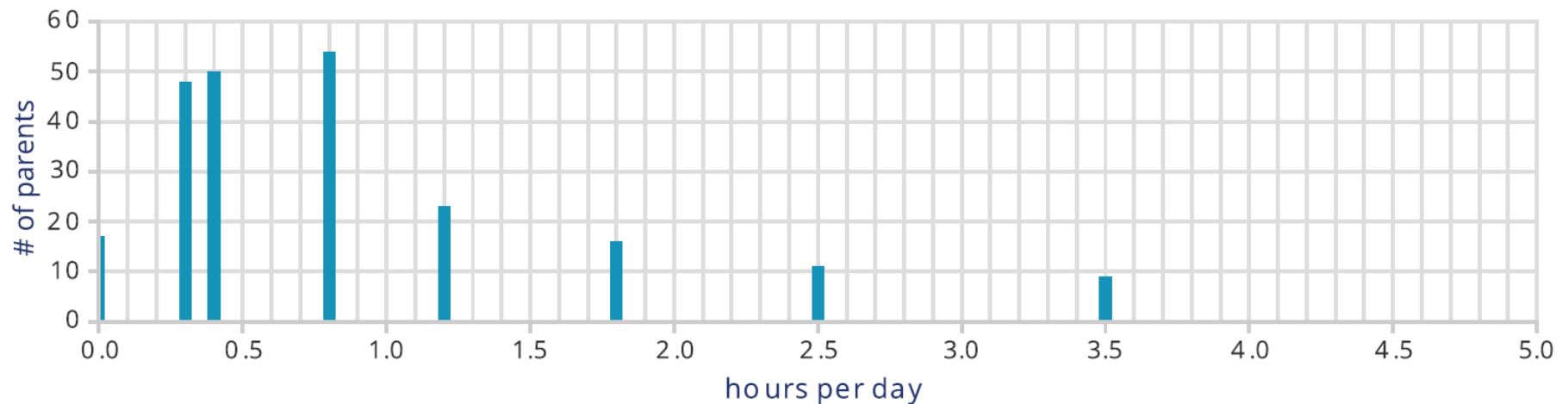
Tell Them From Me Parent Survey

Parents Support Learning at Home

Time on homework

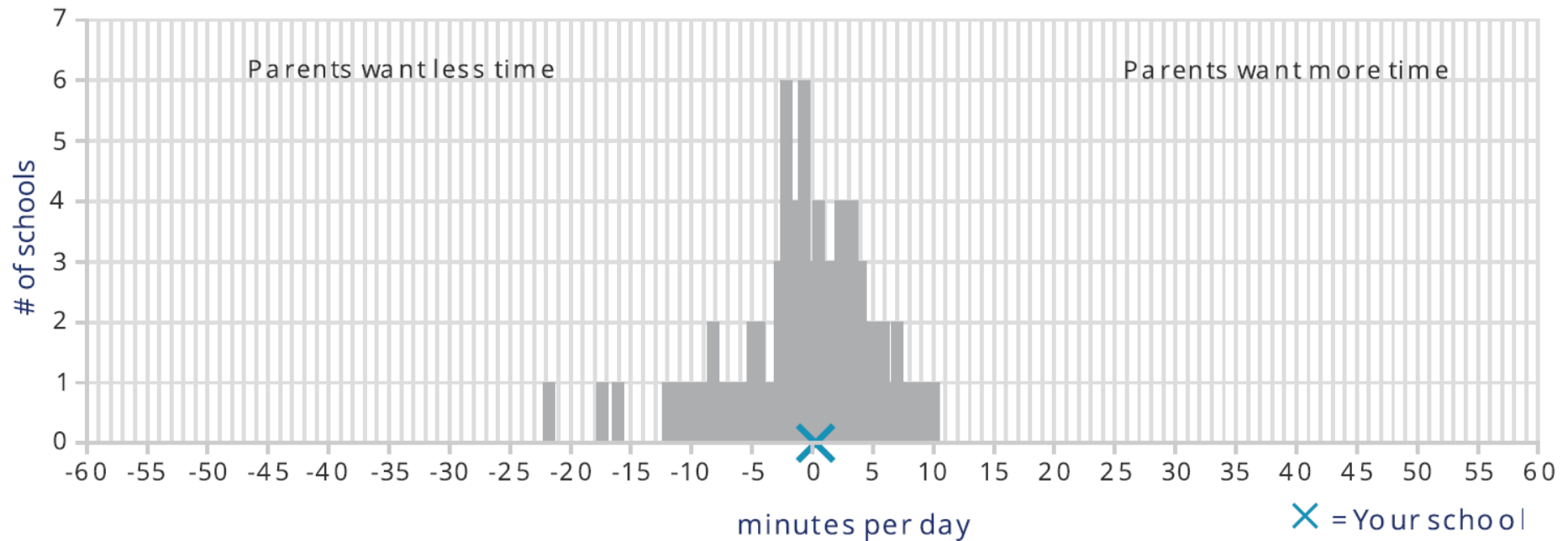
Distribution of the time children spend doing homework each day

On average, how long does your child spend doing homework per week? (Please include time each day after school hours and time on the weekend)



Tell Them From Me Parent Survey

Differences between parents' expectations for homework time versus the actual amount of homework time.
Distribution of different scores at NSW CESE Project





Tell Them From Me Parent Survey

School Supports Learning

School supports positive behaviour

School Mean (NSW Govt Norm)

7.2 (7.7)

Teachers expect my child to pay attention in class.

7.8

Teachers maintain control of their classes.

6.5

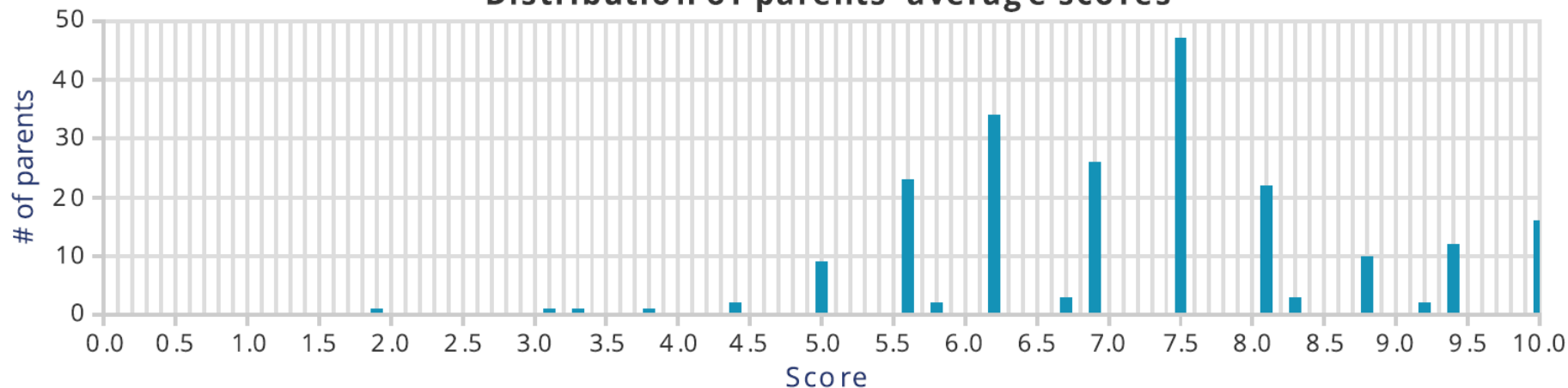
My child is clear about the rules for school behaviour.

8.5

Teachers devote their time to extra-curricular activities.

6.1

Distribution of parents' average scores

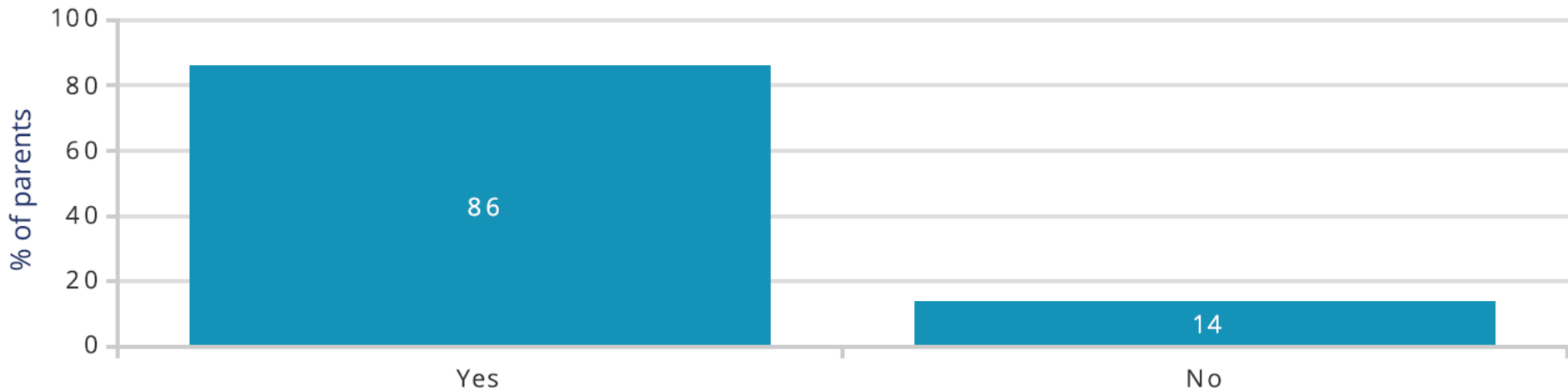




Tell Them From Me Parent Survey

Subjects Available

The subjects that my child wants to study are available at the school.

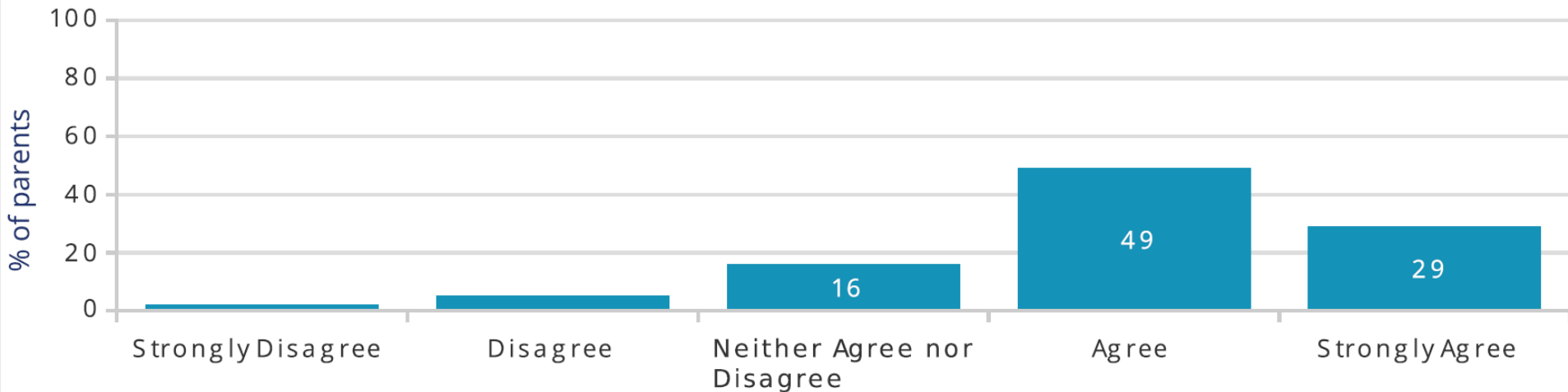




Tell Them From Me Parent Survey

Recommend High School

I would recommend my child's high school to parents of primary school students.

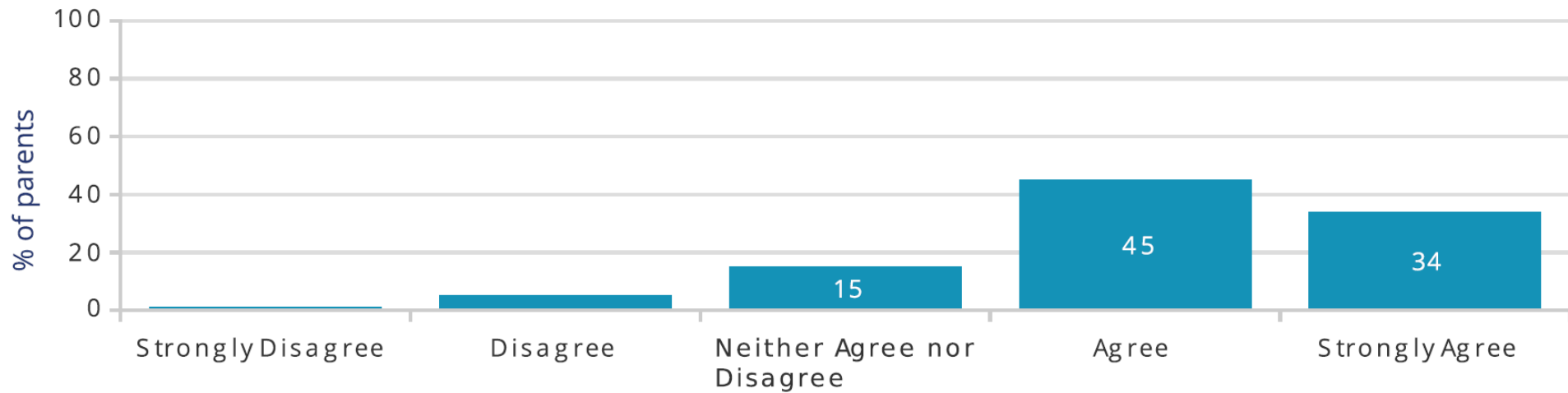




Tell Them From Me Parent Survey

High School Reputation

The high school has a good reputation in the local community.

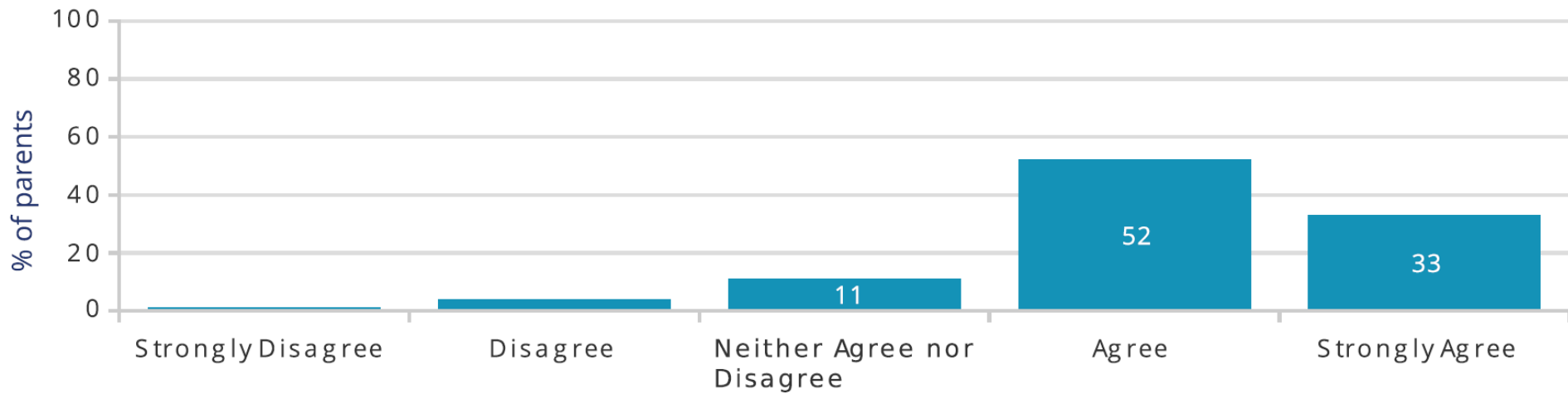




Tell Them From Me Parent Survey

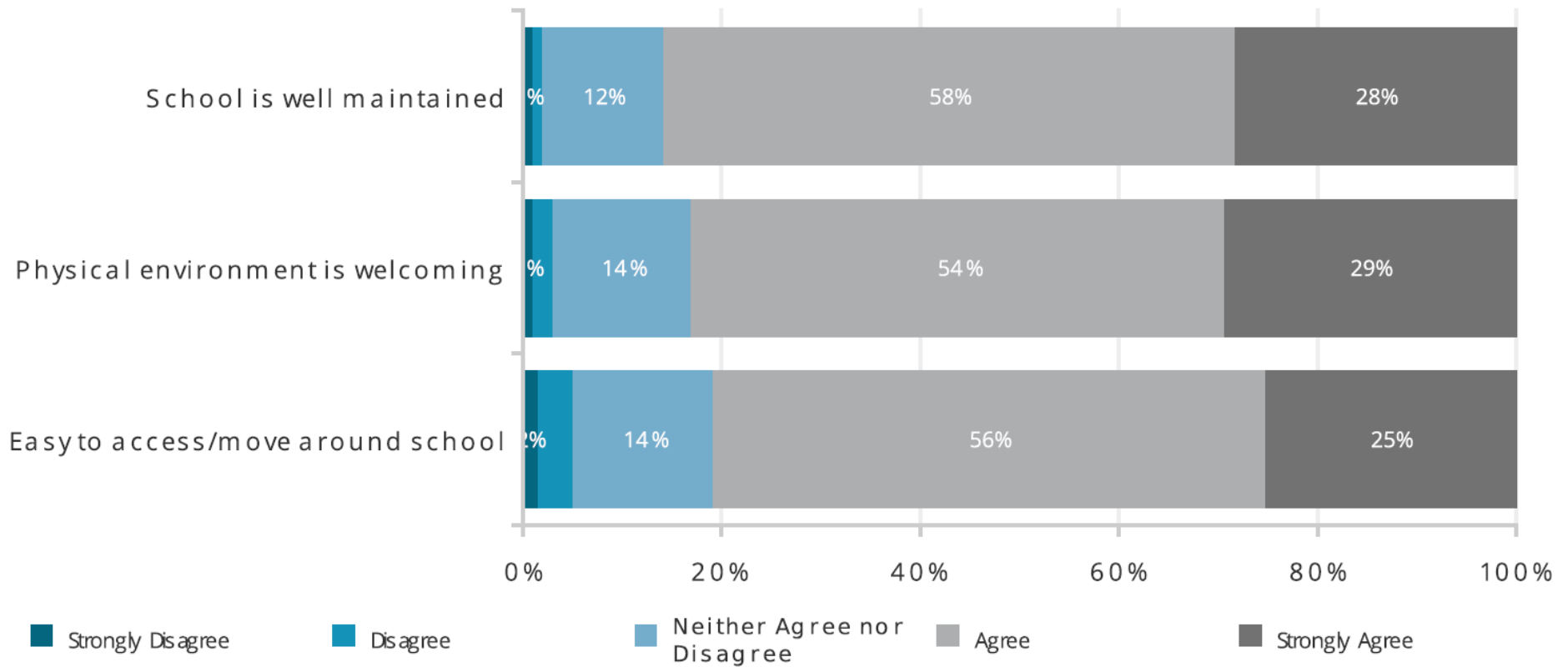
High School Communication Satisfaction

I am satisfied with the general communication from the high school (e.g., newsletters, emails, school website, school app, social media, etc.).



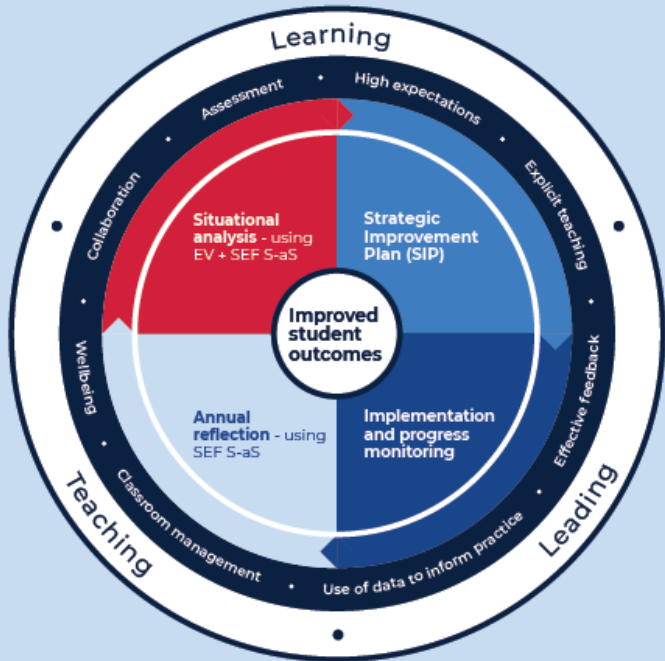
Perception of school facilities

How strongly do you agree with each of the statements:



2021-2024 Strategic Improvement Plan

The School Excellence cycle



○ School Excellence Framework domains ● What works best (CESE) ● School Excellence cycle



Denise James
Deputy Principal



Situational Analysis



2020

Stage 1: Analysed School Data

1. Wellbeing -
2. Student performance -
NAPLAN
HSC
3. Human Resources
4. Finance
5. Enrolment

Stage 2: Analysed School Excellence Framework

Element	2018	2019	EV panel report	Focus themes
Learning culture (DJ)	Sustaining & Growing	S & G	S & G	
Wellbeing (DJ)	Excelling	Excelling	Excelling	
Curriculum (ML)	S & G	S & G	S & G	
Assessment (ML)	S & G	S & G	S & G	
Reporting (ML)	S & G	S & G	Excelling	
Student performance measures (SH)	Delivering	Delivering	S & G	
Effective classroom practice (DJ)	S & G	S & G	S & G	
Data skills and use (SH)	Delivering	Delivering	S & G	
Professional standards (MS)	S & G	S & G	Excelling	
Learning and development (MS)	S & G	S & G	Excelling	
Educational leadership (JC)	S & G	S & G	Excelling	
School planning, implementation and monitoring (JC)	S & G	S & G	Excelling	
School resources (MS)	S & G	S & G	Excelling	
Management practices (JC)	S & G	S & G	Excelling	

Stage 3: Analysed internal school data, research and literature

SCOUT Reports:

- School Dashboard
- Attendance and Engagement
- Community Profile and Enrolments
- HSC
- NAPLAN (DoE)
- NCCD
- Suspensions
- Tell Them From Me
- VALID
- Finance
- Other:

SENTRAL Reports:

- Attendance
- Grades
- N-Award Warnings (amount given and amount resolved)
- Positive Incidents / CHAMP points
- Recognition Letters
- Negative Incidents
- Other:

SCHOOL Reports:

- External Validation
- SEF Self-Assessment
- Current School Plan
- Annual School Report
- Faculty Evaluations
- Edval
- Counsellor data
- Team Surveys
- Faculty RAP Analysis
- Assessment Tasks & Coding
- Student Results
- Student Academic Reports
- TPL Feedback
- P&C Data & Attendance
- Budgets/Orders
- Other:

Stage 4: Considered of all the evidence

1. LOOKING INWARD

What does the data/evidence tell us?

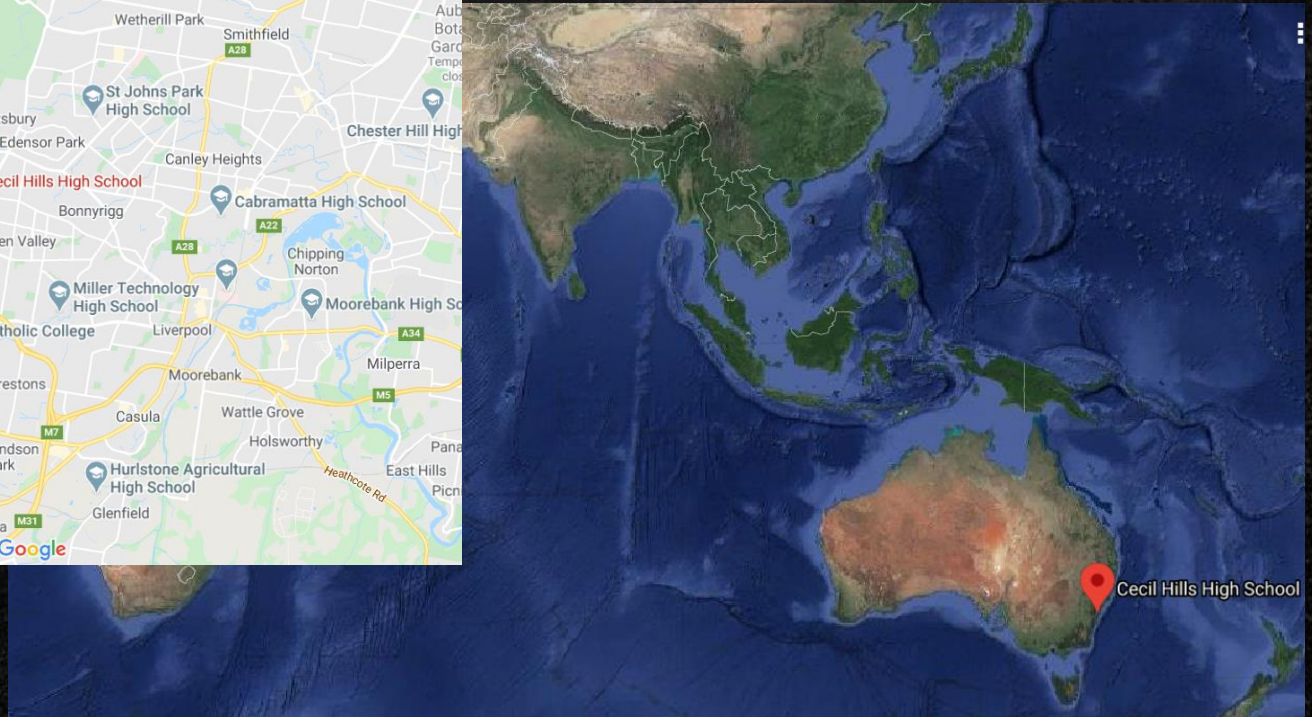
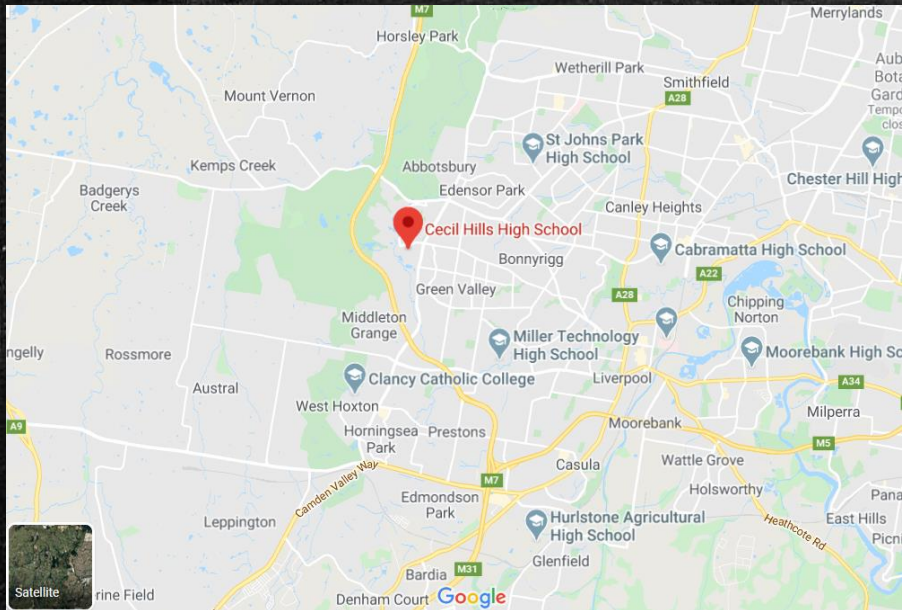
2. LOOKING OUTWARD

What does it mean in relation to our current priorities and evidence-based research?

3. LOOKING FORWARD

How can we consolidate, adapt and innovate current practices to drive improvement at CHHS?

Where are we situated (educationally)?

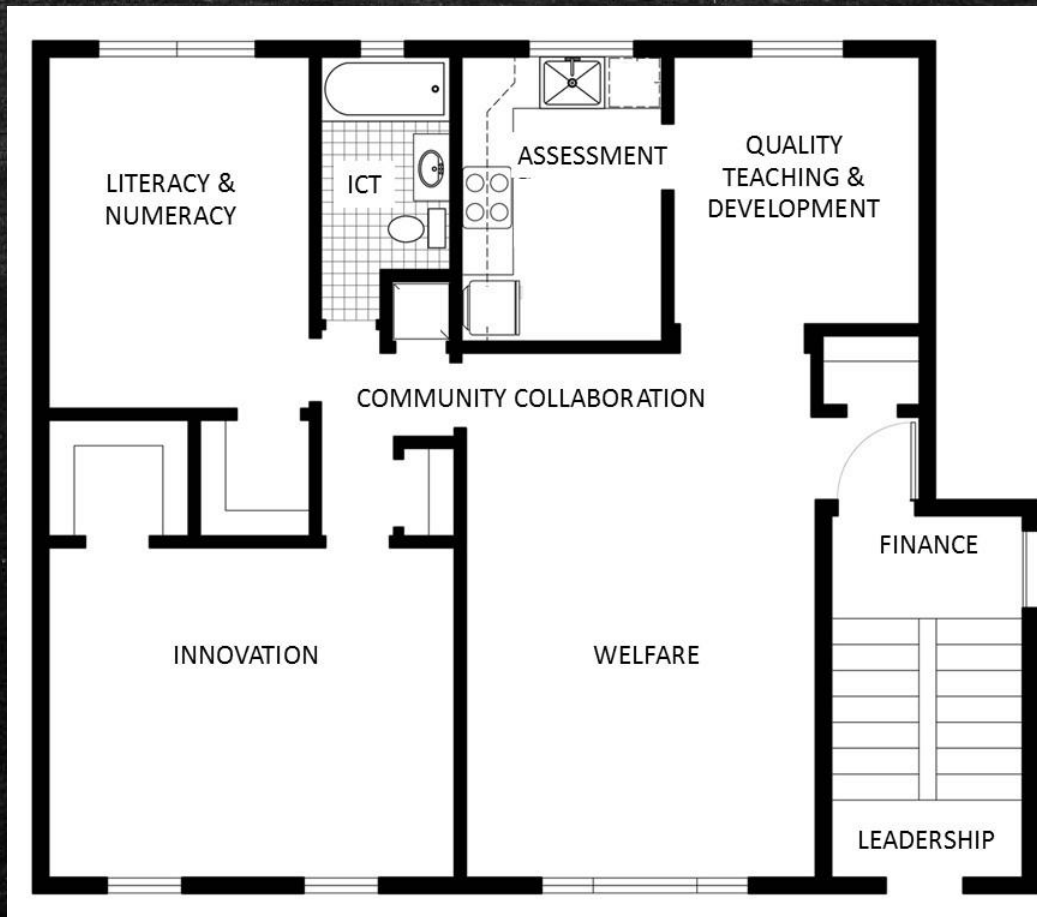




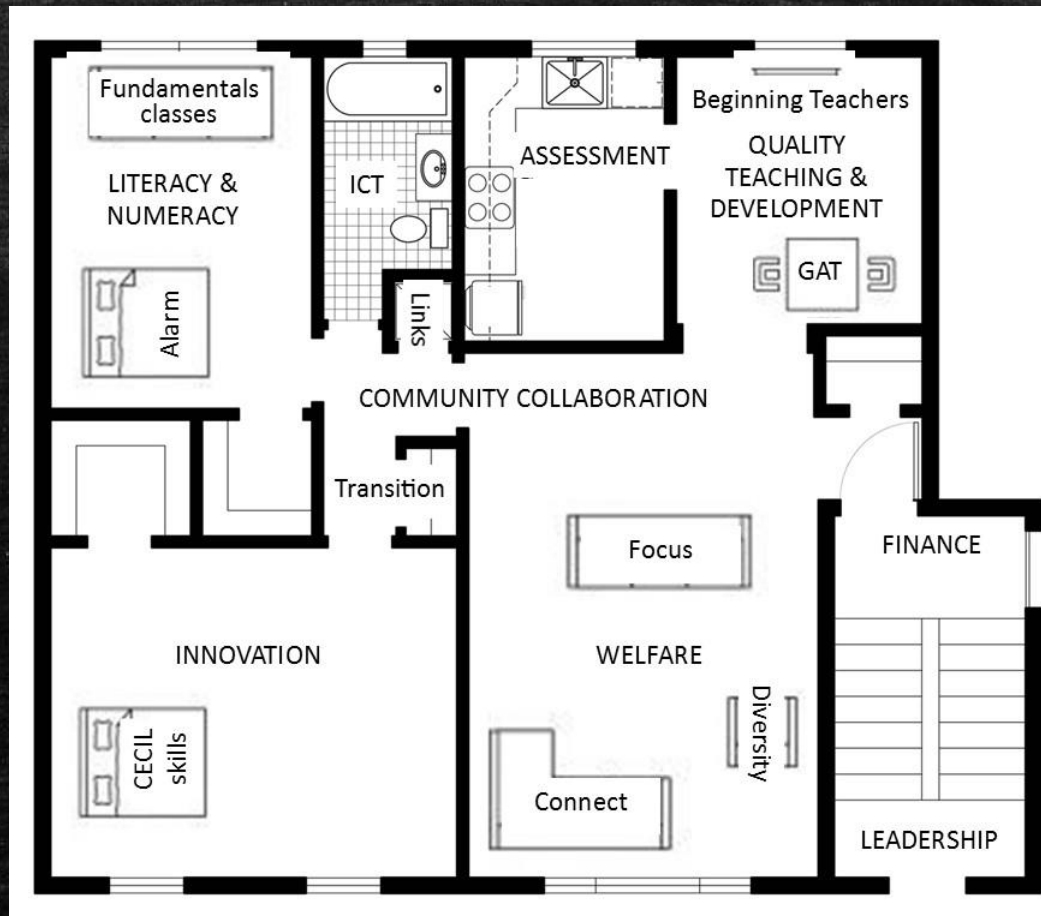
What do we
(metaphorically) need
to demolish, renovate
or add?

Current
School
Plan
2018-2020

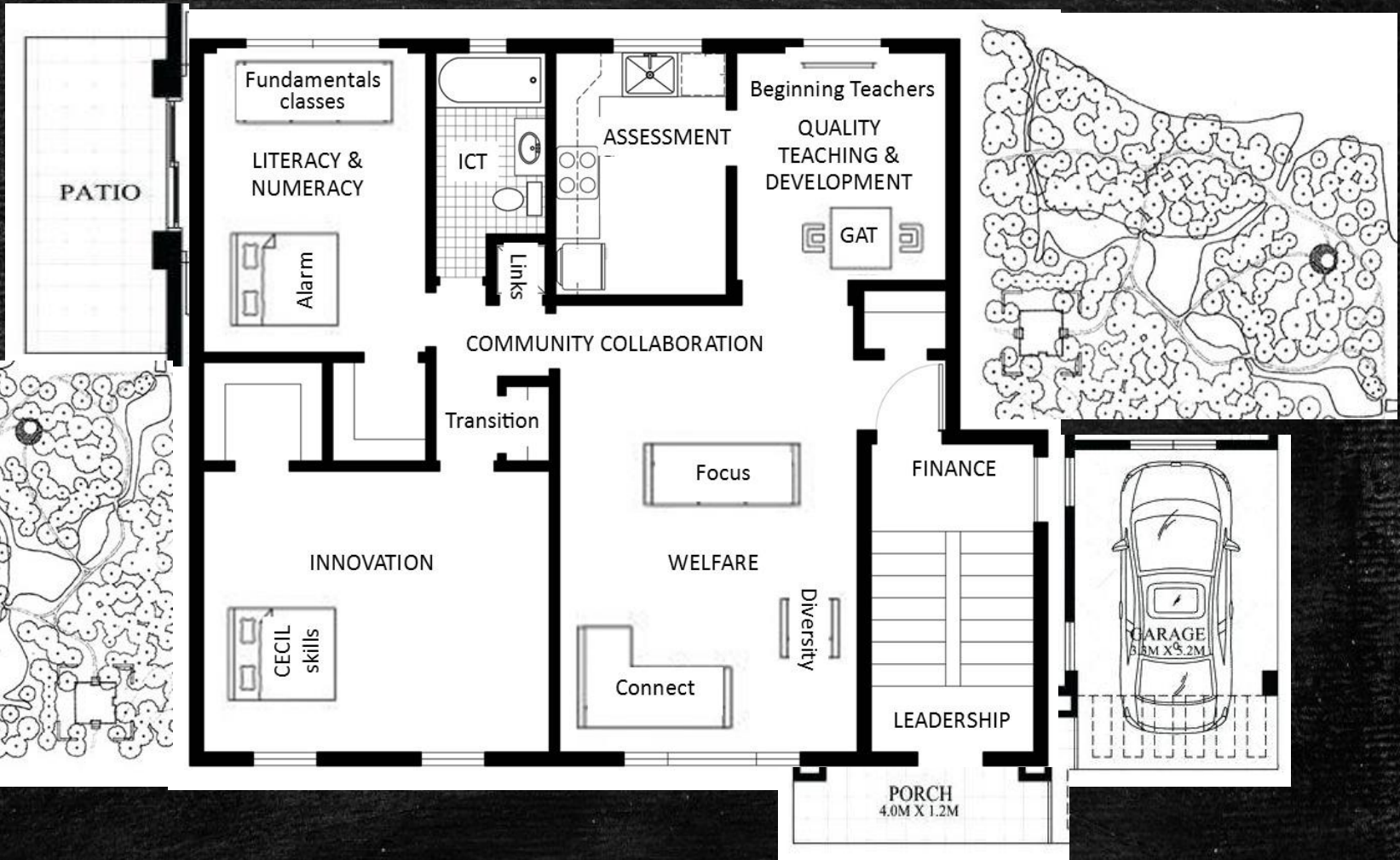
FOCUS
AREAS &
TEAMS



How we
live in
our
current
plan...



What do we need in 2021 & beyond?



Stage 5: Preparing draft strategic directions for community consultation

2021-2024 Strategic Directions

1. Strategic Direction 1: Student growth and attainment
2. Strategic Direction 2: Professional practice and expertise
3. Strategic Direction 3: Community engagement and wellbeing

Strategic Direction 1: Student growth and attainment

- Literacy and Numeracy
- Assessment & Differentiation
- New High Potential and Gifted Education Policy
- Building individual student profiles
- Future pathways

Strategic Direction 2: Professional practice and expertise

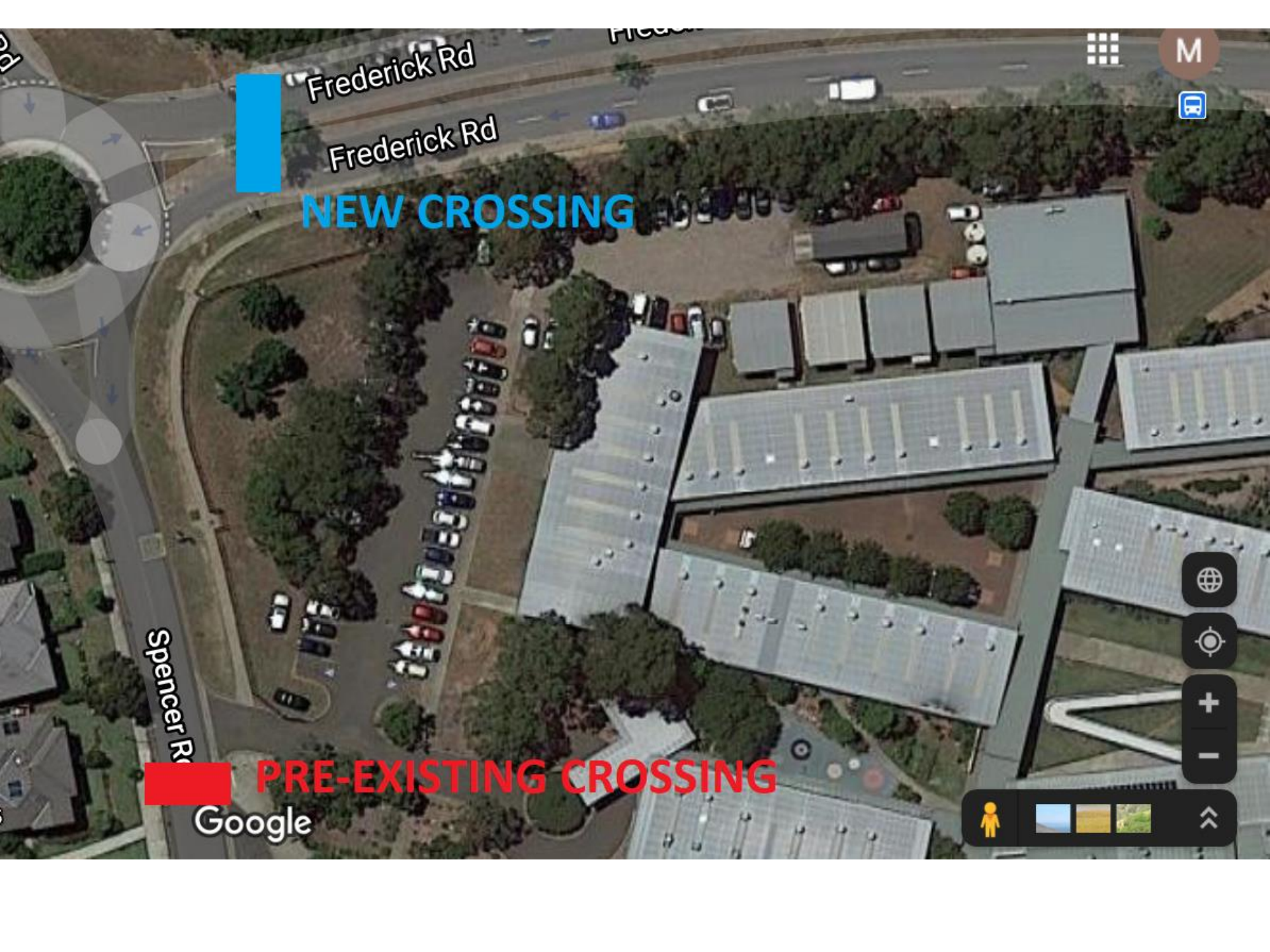
- Innovative practices - CECIL skills, ICT, STEM
- Use of data
- Collaborative practice
- Expert teachers/leaders
- Explicit Teaching - Quality Teaching Rounds, Beginning Teachers

Strategic Direction 3: Community engagement and wellbeing

- FOCUS
- Connect
- Mental health
- Enhanced community partnerships and transition programs
- Attendance

Pedestrian Crossing





Frederick Rd

Frederick Rd

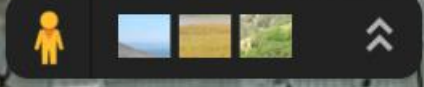
NEW CROSSING

Spencer Rd

PRE-EXISTING CROSSING

Google

M





Pedestrian Crossing

- **application made to Transport for NSW**
- **School Crossing Supervisor program available only to primary schools**
- **Tanya Davies, MP, raised issue with Transport Minister**
- **application made again to Transport for NSW on the basis on safety**
- **application denied**
- **advice Cecil Hills PS could apply on our behalf**
- **contact has been made with Tanya Davies, MP**



Pedestrian Crossing

Please email your thoughts to:

cecilhills-h.school@det.nsw.edu.au



schooltv.me

[Home](#)[Case Studies](#)[Contact](#)[Our Latest Edition](#)[SUBSCRIBE NOW](#)

WELCOME

A wellbeing platform for schools supporting parents

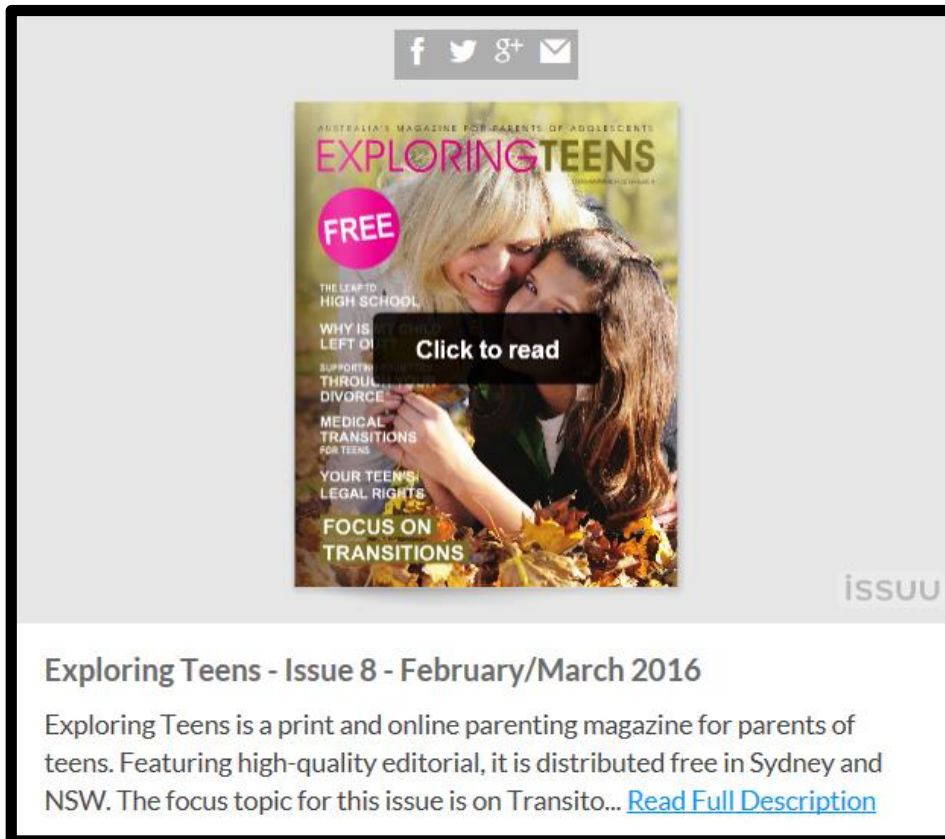
SchoolTV is a world first, wellbeing platform featuring Dr Michael Carr-Gregg. It addresses the modern day realities faced by schools and parents who increasingly need clear, relevant and fact-based information around raising safe, happy and resilient young people.

Whilst there is a great deal of information available, this can often be confusing and overwhelming for parents looking for guidance. SchoolTV addresses this issue. It is an online resource designed to empower parents with credible, sound information with realistic and practical strategies.

SchoolTV is a school branded resource that is available through subscribed schools thus allowing parents to access information on individual topics.



Exploring Teens (Online Magazine)



The screenshot shows the website for Exploring Teens. At the top, there are social media icons for Facebook, Twitter, Google+, and Email. Below these is the magazine cover for Issue 8, February/March 2016. The cover features a woman and a young girl embracing. Text on the cover includes: 'AUSTRALIA'S MAGAZINE FOR PARENTS OF ADOLESCENTS', 'EXPLORING TEENS', 'FREE', 'THE LEAP TO HIGH SCHOOL', 'WHY IS LEFT O...', 'SUPPORTING THROUGH DIVORCE', 'MEDICAL TRANSITIONS FOR TEENS', 'YOUR TEEN'S LEGAL RIGHTS', and 'FOCUS ON TRANSITIONS'. A black button with white text says 'Click to read'. The word 'ISSUE' is partially visible at the bottom right of the cover.

Exploring Teens - Issue 8 - February/March 2016

Exploring Teens is a print and online parenting magazine for parents of teens. Featuring high-quality editorial, it is distributed free in Sydney and NSW. The focus topic for this issue is on Transito... [Read Full Description](#)

- **useful website with loads of information for parenting teenagers**
- **magazine is produced every two months**
- **Facebook page regularly links to useful articles on teenagers and education**

Raising Children Website/App




Search the site

- 🏠 pregnancy
- newborns
- babies
- toddlers
- preschoolers
- school age
- pre-teens
- teens**
- grown-ups
- autism
- dis

The Australian Parenting Website



[/raisingchildren.net.au/teens](https://raisingchildren.net.au/teens)

-  Behaviour
-  Communicating & relationships
-  Development
-  Entertainment & technology
-  Family life
-  Healthy lifestyle
-  Mental health & physical health
-  School, education & work
-  Teenagers: videos
-  Parenting in Pictures: teens

<https://raisingchildren.net.au/>



Our Next Parent Meeting

6:30pm on Monday, 7 December 2020

Questions



**THIS
PRESENTATION
WILL BE
EMAILED
TO YOU**