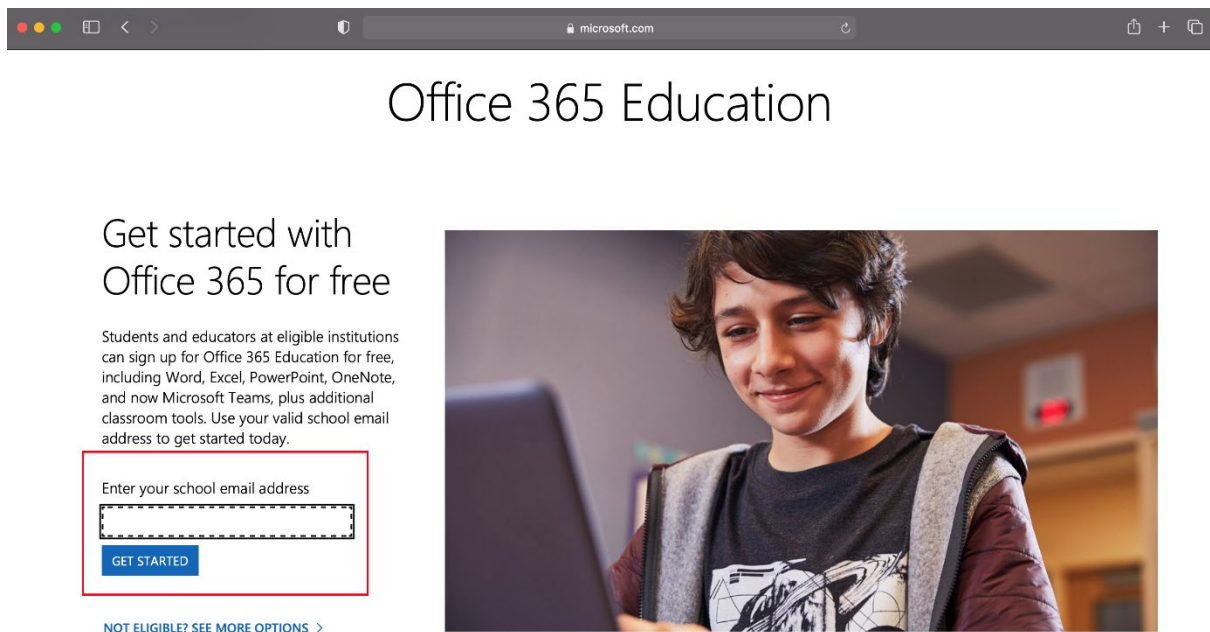


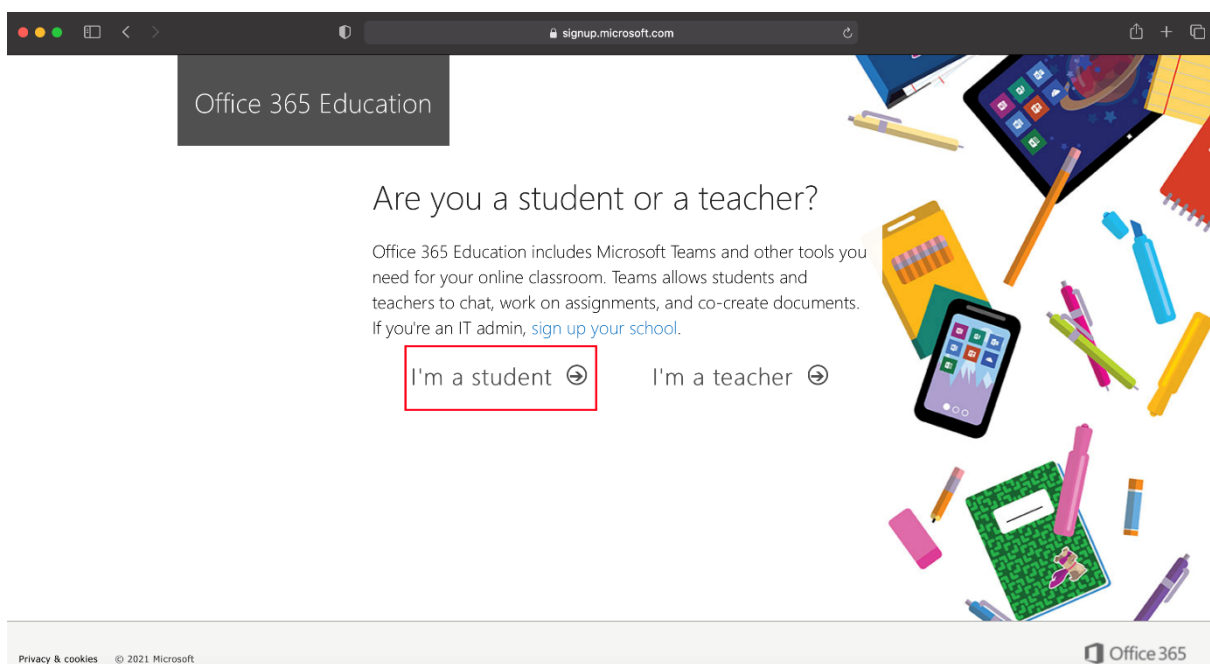
MS OFFICE 365 Student Installation Setup

1 - Go to the following link and enter your student e-mail

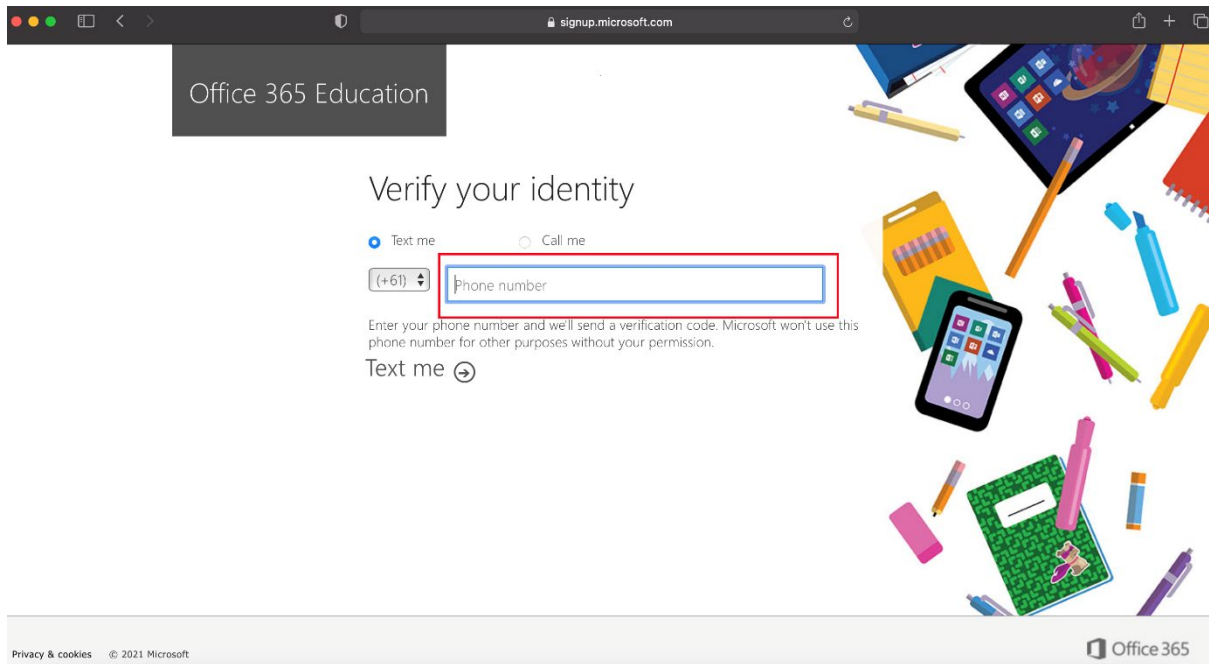
<https://www.microsoft.com/en-au/education/products/office>



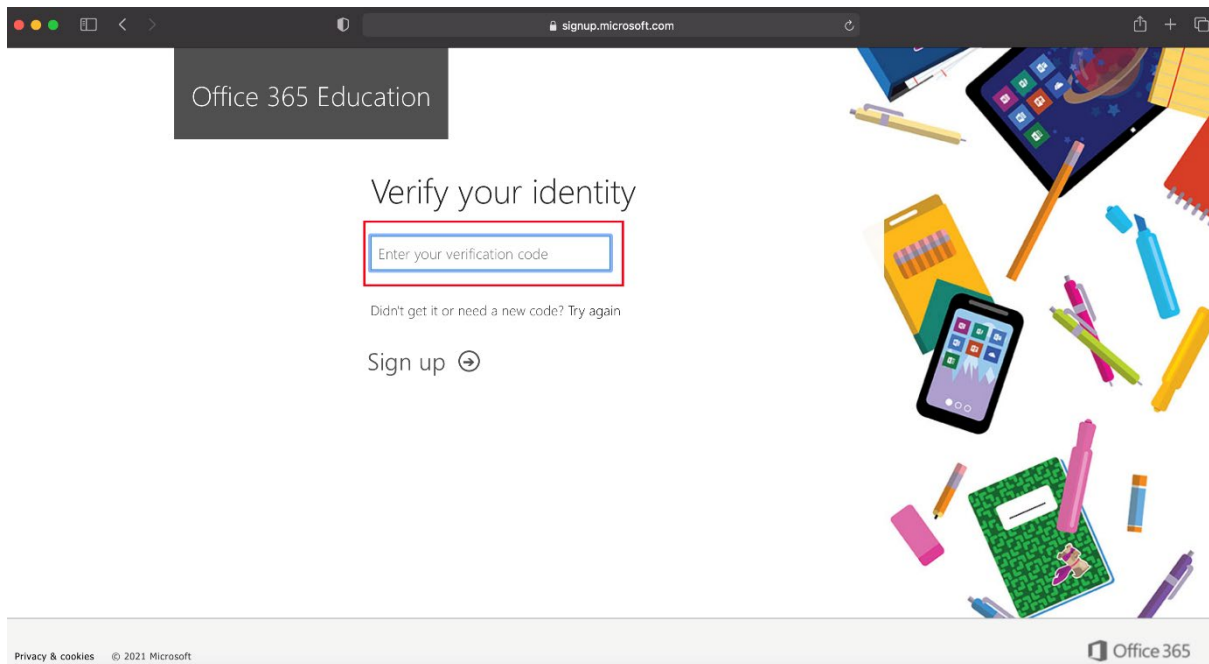
2 - Select “I’m a student”



3 - Enter your phone number for a verification text



4 - Enter the verification code you received on your phone



5 - Click Sign In

Office 365 Education

You have an account with us

To get your free Office, sign in with your Office 365 user ID and password.

Sign in →

Privacy & cookies © 2021 Microsoft

Office 365

6 - Log in with student portal details (firstname.lastname and DET password)

NSW DEPARTMENT OF EDUCATION

Login with your DoE account

User ID

Enter your user ID

Enter your password

Log in

[Forgot your password?](#)

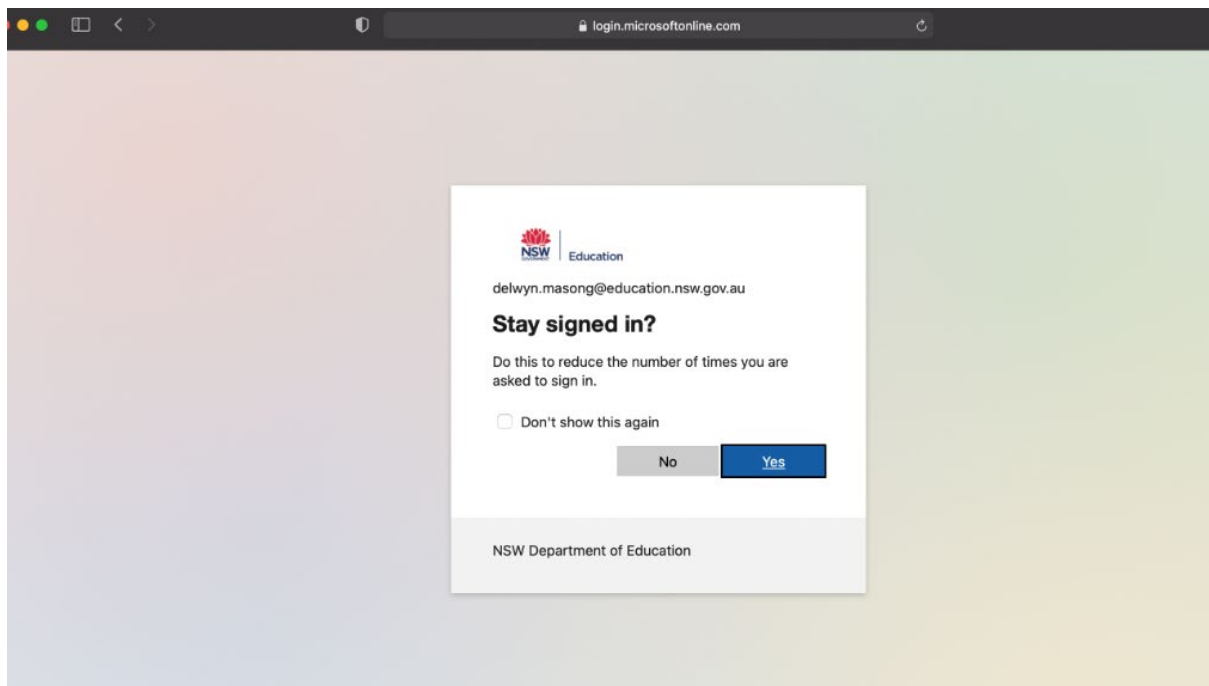
[Have trouble logging in?](#)

NSW GOVERNMENT Education

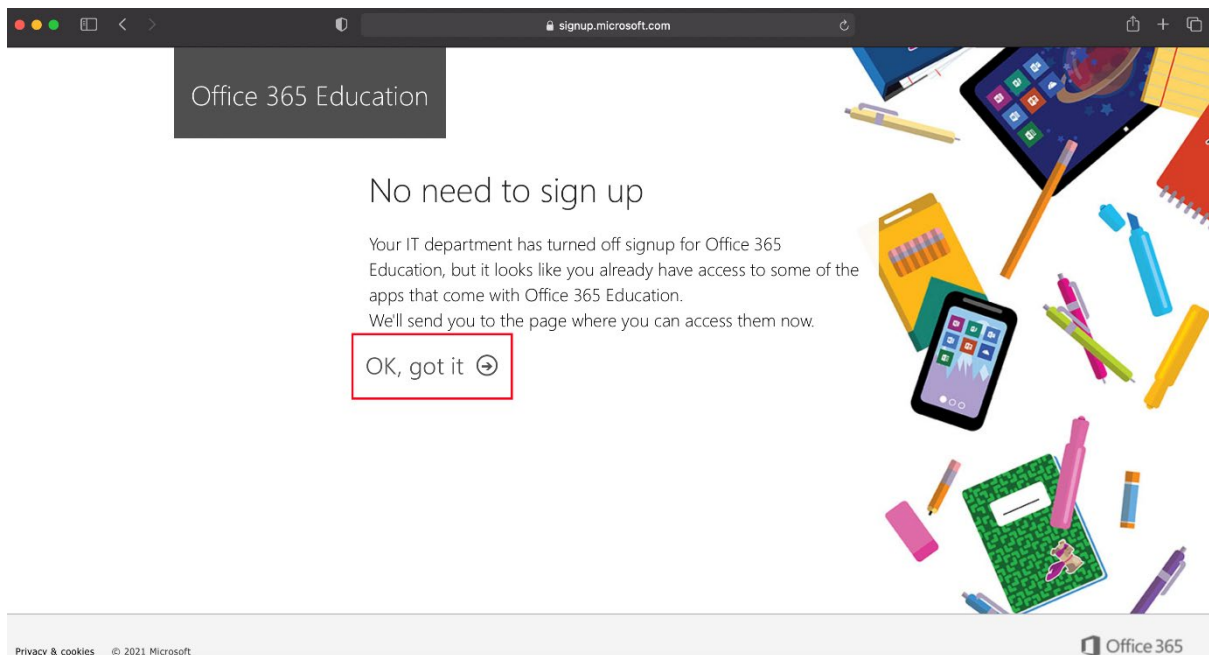
ACCESSIBILITY
INFORMATION ACCESS
PRIVACY

COPYRIGHT
DEPARTMENT CONTACTS
NSW GOVERNMENT

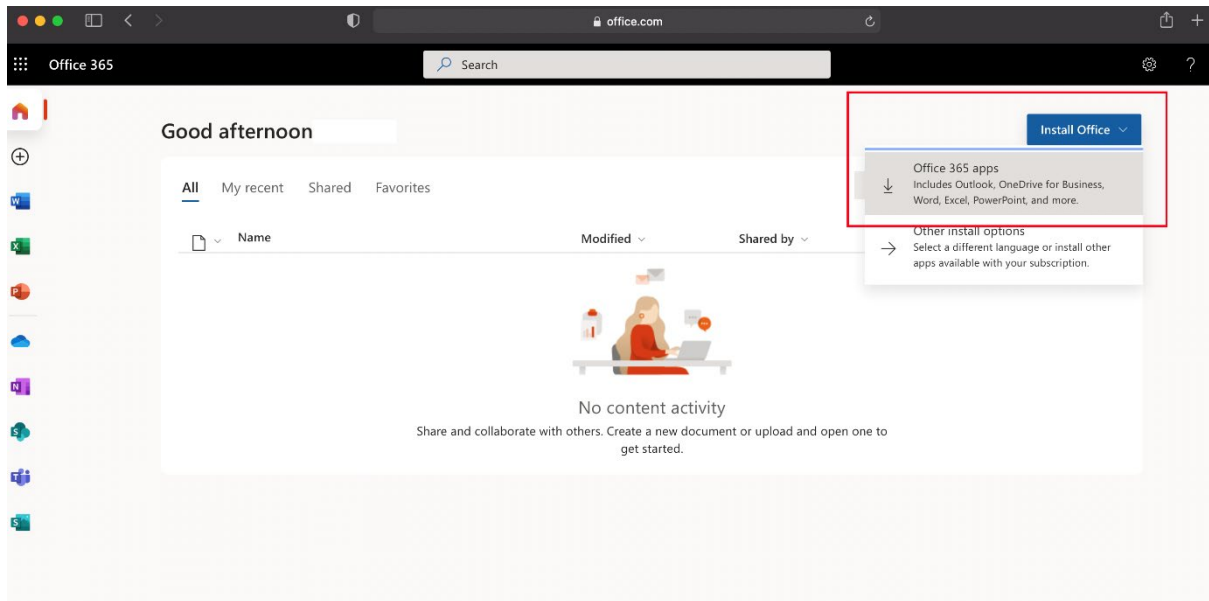
7 - Select the “Do not show this again” tick box and click Yes



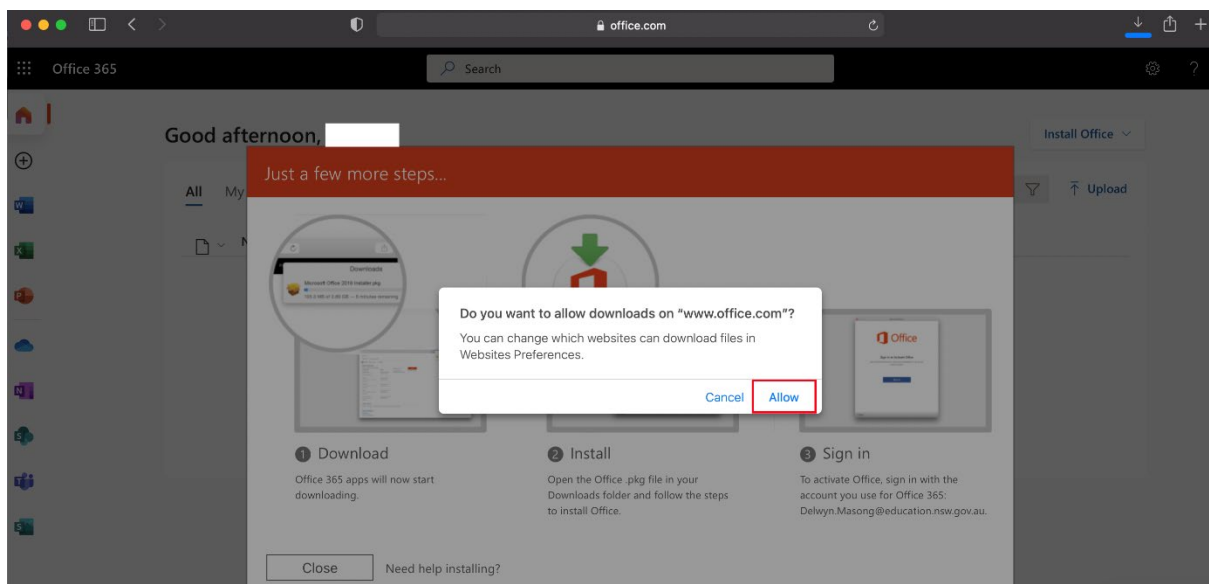
8 - Click “Okay, got it”



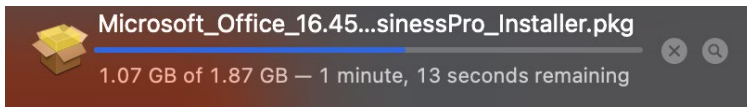
9 - Click “Install Office” and Select “Office 365 apps”



10 - Click “Allow” (if asked)



11 - Allow installation file to finish downloading



12 - Once downloaded open file and follow installation prompts as per **Operating System (Mac/PC)**

Note: If you encounter any issues at this stage come see IT Support in the library.

13 - Once Completed **open** up one of the Office Programs (Eg Word/Excel) to activate account. Once prompted with the window below click **Sign In**.



14 - Enter student e-mail



Sign in

No account? [Create one!](#)

Next

15 - Enter DET Student User ID and Password.

Login with your DoE account

User ID

Example: jane.citizen1

Password

[Log in](#)

16 – Ready to use

